

# PRODUCT INFORMATION

## REGUPOL EVERROLL ULTIMATE



### Product:

resilient floor covering made of PUR-bonded EPDM-granulates, with 100 % EPDM colour content

### Areas of Application:

Fitness Sports & Leisure, Commercial, Retail and Education flooring

### Features:

comfortable, robust, durable, sustainable, slip resistant, virtually impermeable to water

### Standard Roll Dimensions:

Width: 1,250 mm  
Natural: 4 mm (40lm), 8 mm (25lm)  
Sealed: 4 mm (20lm), 8 mm (25lm)

### Standard Dimensions Modular Tiles:

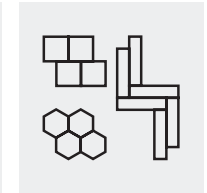
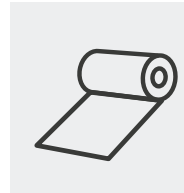
Tile: 600 x 600mm  
Plank: 1200 x 300mm  
Hexagon: 600 x 520mm  
Thicknesses: 4mm and 8mm

### Weight:

approx. 1.38 kg/m<sup>2</sup>/mm

### Impact Resistance:

> 21 Nm based on EN 14904 / EN 1517



### Force Reduction:

up to 14 % based on EN 14904 / EN 14808

### Slip resistance:

AS 4586:2013 Slip resistance classification of new pedestrian surface materials, Appendix A – Wet Pendulum Test. Slip Certificate available on request.  
Natural: P4, Sealed: P2, Slip Resistant Sealed: P5

### Colours:

22 standard colours

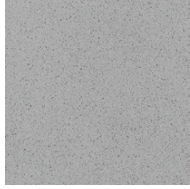
Further technical data is available on request.



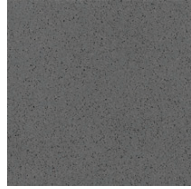
PRODUCT INFORMATION  
**REGUPOL EVERROLL ULTIMATE**



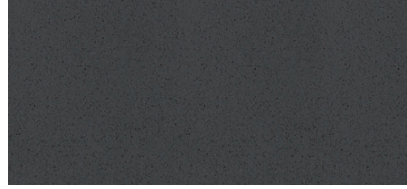
**REGUPOL everroll ultimate** Available natural or sealed



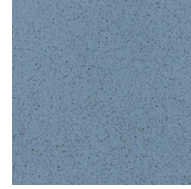
Manila [1105]  
4 | 8 mm



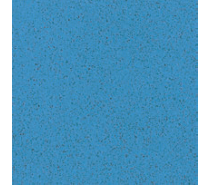
Osaka [1187]  
4 mm



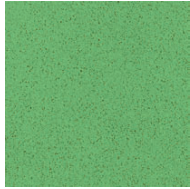
Lima [1113]  
4 mm



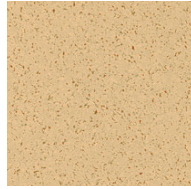
Boston [1112]  
4 mm



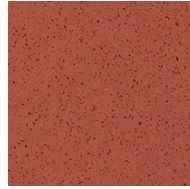
Seattle [1010]  
4 mm



Galway [1009]  
4 mm



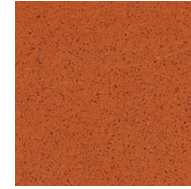
Yuma [1030]  
4 mm



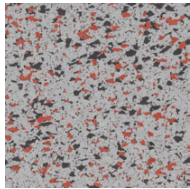
Lagos [1008]  
4 mm



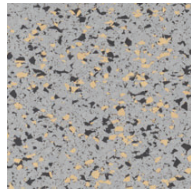
Melbourne [1074]  
4 mm



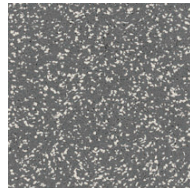
Amsterdam [1036]  
4 mm



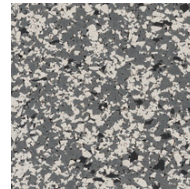
Jakarta [3003]  
4 mm



Kýpros [3002]  
4 mm



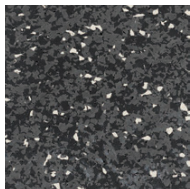
Oslo [1208]  
4 mm



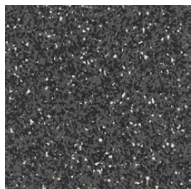
Paris [1085]  
4 | 8 mm



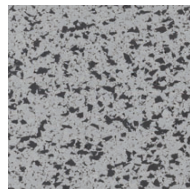
Berlin [2005]  
4 mm



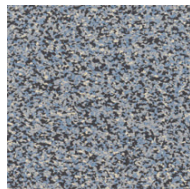
Mons [3138]  
4 | 8 mm



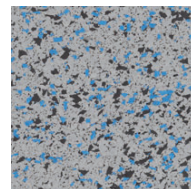
Pompeji [1194]  
4 mm



Island [3000]  
4 | 8 mm



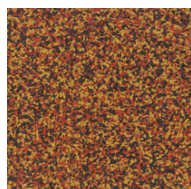
Nome [2004]  
4 mm



Helsinki [3001]  
4 mm



Kush [2001]  
4 mm



Goa [2000]  
4 mm

All images are for illustration purposes only. Please request a product sample from your **REGUPOL** team before making a decision. The **REGUPOL everroll** rubber flooring is made from recycled materials, variations in the shading, EPDM and colour chip dispersion is normal.

We reserve the right to make changes to the technical data. The test results and specified values are subject to a tolerance of +/- 10 %. Crucial for the up-to-date data is the information on our homepage [www.regupol.com.au](http://www.regupol.com.au)